



CTPATTM

YOUR SUPPLY CHAIN'S STRONGEST LINK.

CTPAT Webinar: Automated Commercial Environment (ACE)



U.S. Customs and
Border Protection

Goals

- CBP
 - Challenges faced by CBP
- CTPAT Program
 - Benefits
 - Collaboration with private sector
- Automated Commercial Environment (ACE)
 - Introduction to ACE
 - E-Manifests
 - Advice
- Questions and answers



U.S. Customs and
Border Protection



What is CBP?



- CBP, Customs and Border Protection, is one of the largest and most complex components of the United States Department of Homeland Security, whose primary mission is to keep terrorists and their weapons out of the United States. It is also responsible for securing and facilitating commerce and tourism while enforcing hundreds of US regulations, including immigration and narcotics laws.



U.S. Customs and
Border Protection



Challenges faced by CBP



- Trade volume to the United States continues to increase
- CBP cannot examine 100% of cargo without causing delays and impacting legitimate trade flow



U.S. Customs and
Border Protection



In one day CBP

Processed:

- 1,124,075 passengers and pedestrians
- 371,912 - international air passengers and crews
- 70,414 sea passengers and crews
- 681,750 land passengers
- 273,338 vehicles
- 78,703 trucks, wagons, and containers
- \$ 7.3 billion in imported products
- 97,342 entries of merchandise by air, sea and land
- \$224 million in taxes

Made:

- 23 arrests of subjects with arrest warrants.
- 790 rejections of inadmissible persons at ports of entry

Seized:

- 3,707 pounds of assorted narcotics
- \$ 207,356 in undeclared or illegal money
- \$4.3 million products in violation of intellectual property rights

Intercepted:

- 18 fraudulent documents



U.S. Customs and
Border Protection



Coronavirus COVID-19

- *CBP Confirmed COVID-19 Cases*

- Nationwide - 1,931 Cases

- LFO – 210

- Brownsville - 49
- Progresso - 11
- Hidalgo - 38
- Rio Grande - 7
- Rome - 11
- Laredo - 67
- Eagle Pass - 14
- Del Rio - 9
- CEE – 2
- Laredo Field Office - 2



U.S. Customs and
Border Protection

Coronavirus COVID-19



U.S. Customs and
Border Protection





U.S. Customs and Border Protection

Our Mission

"To detect and prevent the entry of terrorists and terrorist-controlled weapons into the United States, while efficiently facilitating the flow of legitimate commerce and people into and across our nation's borders."



U.S. Customs and
Border Protection



CTPAT[™]
YOUR SUPPLY CHAIN'S STRONGEST LINK.

Supply chain



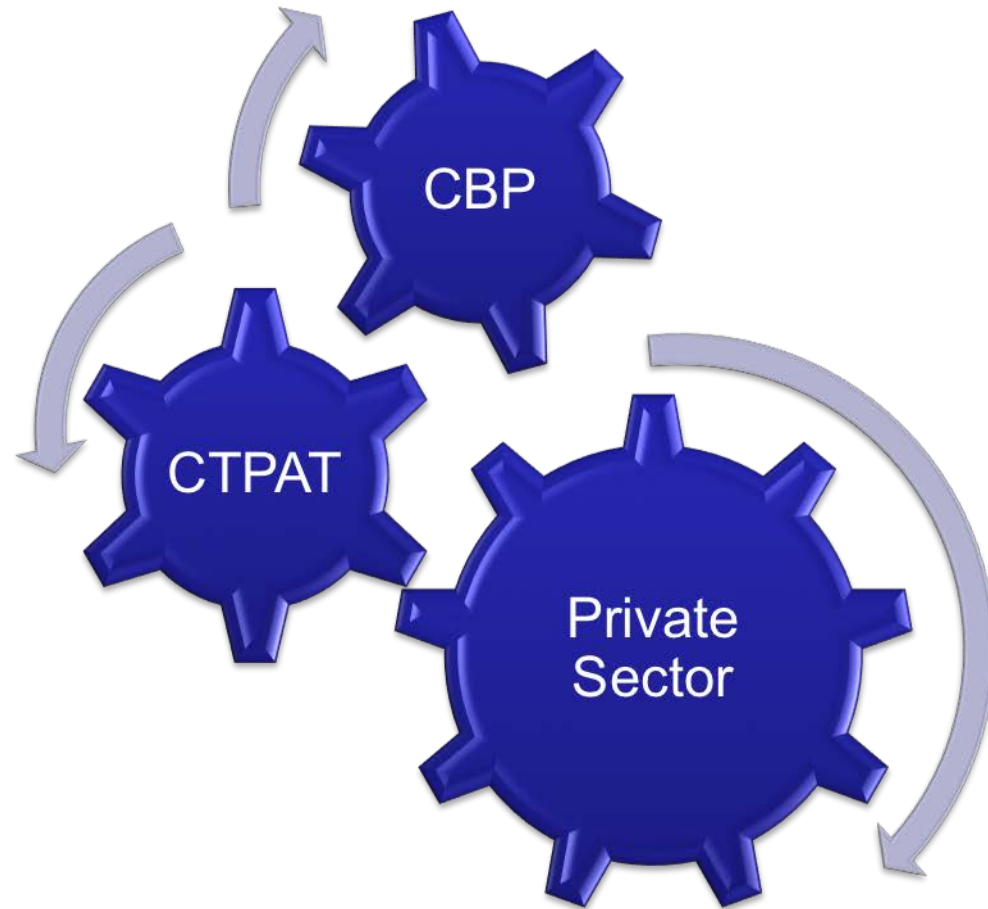
For CTPAT purposes - The supply chain is defined from the point of origin (manufacturer/supplier/vendor) to the point of distribution



**U.S. Customs and
Border Protection**



Collaboration with private sector



U.S. Customs and
Border Protection



CTPAT[™]
YOUR SUPPLY CHAIN'S STRONGEST LINK.

Automated Commercial Environment (ACE)



U.S. Customs and
Border Protection



CTPAT[™]
YOUR SUPPLY CHAIN'S STRONGEST LINK.

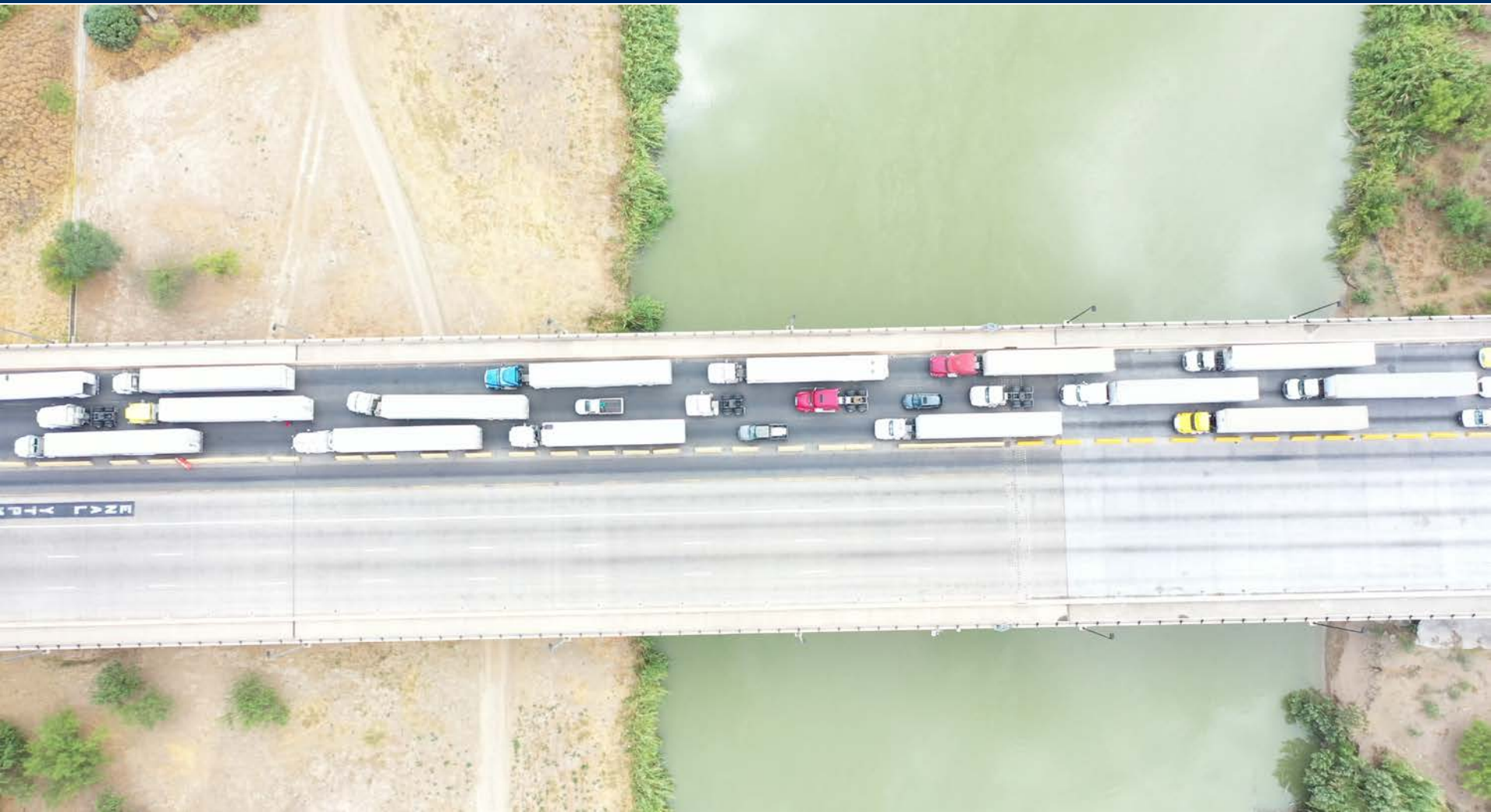
Automated Commercial Environment (ACE)



U.S. Customs and
Border Protection



Automated Commercial Environment (ACE)



U.S. Customs and
Border Protection



Automated Commercial Environment (ACE)



- There are three options when using the EDI program that has been approved by CBP
 1. Their own developed EDI interface
 2. Software application provided by a software vendor
 3. Service Provider



U.S. Customs and
Border Protection



Automated Commercial Environment (ACE)

It's recommended that:

- It is recommended that you have at least two methods for sending e-Manifests in case one of your transmission methods is not available.
- If Customs and Border Protection (CBP) is able to receive e-Manifests, you are required to submit your manifests electronically.
- Carriers are required to submit an e-manifest one hour prior to arrival in the United States.
- If the carrier has cargo that qualifies under the Free and Secure Trade (FAST) program, it must submit the electronic declaration at least half an hour before its arrival at the US border.
- Update your truck data on the DTOPS site
 - If you change license plates
 - If you change addresses
 - If you replace the windshield
- Try to pay your fees before they are due annually to avoid delays
- When sending your data, it is preferable that you send as much information as possible to avoid delays.
 - Manufacturer Identification (MID)
 - Make sure you are sending all the data



U.S. Customs and
Border Protection



ACE Truck e-manifest - phase 1



Automated Commercial Environment (ACE) ELECTRONIC TRUCK MANIFEST

PHASE 1

There will be no impact to EDI

PHASE 2

*Expect it in winter 2020
There will be no impact to EDI*

PHASE 3

*Date to be determined
There will be no impact on EDI*

CBP will implement the first of three phases at ACE to improve functionality for truck carriers. The first phase of this project will include a modernized portal in ACE's manifest for commercially-oriented trucks. Upon completion of all three phases, CBP will retire the legacy electronic manifest system for truck carriers.

PHASE 1



COMPLETION

Deployment to testing environment in December 2019; production on June 22, 2020.



IMPACT

Trucking Business Partners



GOAL

Optimize ACE functionality and improve user experience



U.S. Customs and
Border Protection



ACE Truck e-manifest - phase 1

Modernization of ACE carrier capacities -Phase 1

New features	New functionality
Templates	Allows users to save information for products, manifests, or invoices.
Bill of lading types	Addition of instruments of international trade 10.41a, ID, international mail, FTZ, Department of Defense shipments.
"File Entry" status	Indicates if an entry is on file for each bill of lading.
Predictive text search field	Allows quick access to account information, eliminating the need for multiple clicks on the screen, reducing time to create guides and manifests.

Visit <https://www.cbp.gov/trade/automated/ace-truck-manifest-phase-1>
for updates on the electronic truck manifest.



U.S. Customs and
Border Protection



Automated Commercial Environment (ACE)

- For more information on the latest on e-Manifest:
<https://www.cbp.gov/trade/automated/ace-truck-manifest-phase-1>
 - Training
 - Webinar
 - Support Calls

The screenshot shows the U.S. Customs and Border Protection (CBP) website. The header includes the CBP logo, the text "U.S. Customs and Border Protection", and links for "Get Email Updates", "Contact Us", and "Comunicarse con Nosotros". A navigation bar contains links for "About CBP", "Newsroom", "Travel", "Trade", "Border Security", and "Careers". Below the navigation bar, the breadcrumb trail reads "HOME >> TRADE >> AUTOMATED".

The main content area is titled "Enhancements to ACE Truck Manifest". It features three images of trucks. Below the images, the section is titled "Phase 1". The text describes the first phase of enhancements to the ACE Truck Manifest, which will provide a modernized trade-facing truck manifest User Interface (UI) accessed through the ACE Secure Data Portal (ACE Portal). It mentions that the enhancements will be deployed on December 9, 2019, and that users will have the option to file manifests in the ACE Portal using either the current or new UI. It also notes that the current UI will be retired on June 22, 2020, and that users will be required to use the new UI for ACE Portal manifest filings. The text encourages users to review the "Testing Environment" section of the ACE Truck Manifest - Phase 1 Information Notice.

Below the text, there is a table with the following data:

Target Dates	Testing Login	ACE Portal
December 9, 2019 – March 2, 2020	New Manifest UI	Current UI for Manifests

On the right side of the page, there is a sidebar with "ACE Truck Manifest Support" information, including email addresses (acettruckmod@cbp.dhs.gov, ACE.Support@cbp.dhs.gov) and a phone number (1-866-530-4172). Below this, there is a "Relevant Communications" section with a list of messages, including "CSMS #43774909 - REMINDER: ACE CERTIFICATION EXTENDED Maintenance, Wed. August 26, 2020 @ 1700 ET to Midnight ET 08/26/2020 02:33 PM EDT" and "CSMS #43770806 - Food and Drug Administration (FDA) End-Dated Center for Devices and Radiological Health (CDRH) Product Code 08/26/2020 09:31 AM EDT".



U.S. Customs and
Border Protection



Benefits and Incentives

- Prevention of drug trafficking and terrorism, as well as loss of merchandise or any type of theft.
- Less chance of being screened.
- Greater organization of Asset Security processes.
- Improves management and coordination of international border crossings
- Wait times are considerably reduced

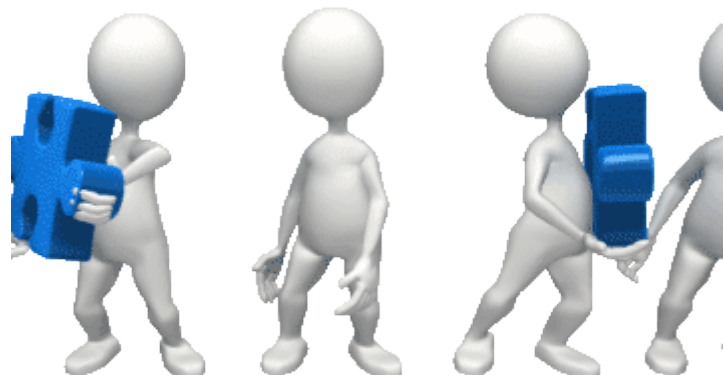


U.S. Customs and
Border Protection



Benefits and Incentives

- Heavy loads receive front-of-line privileges
- Intensive cargo below undergoes joint inspection and is only unloaded once
- Transit inventory costs are greatly reduced
- Business compliance rate for UCP participants approaches 99%



U.S. Customs and
Border Protection



Joint Office

- The **joint office** is a bilateral cooperation program that allows inspection of **goods** by of the United States of America (USA) customs authorities in Mexican territory, and vice versa (Memorandum of understanding to start the **Joint Customs Office** Program between both nations).



U.S. Customs and
Border Protection



Thank you!

SCBPO Arnulfo Molina

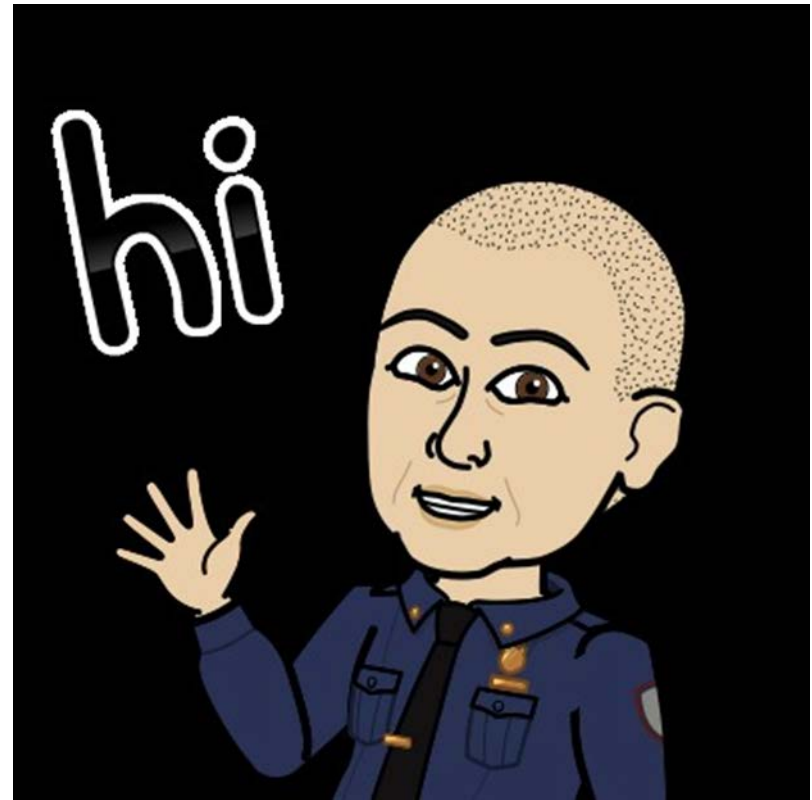
Program Manager

Laredo Field Office

Office: 956-753-1009

Cell: 956-962-5901

Arnulfo.Molina@cbp.dhs.gov



U.S. Customs and
Border Protection



Questions?



U.S. Customs and
Border Protection

